

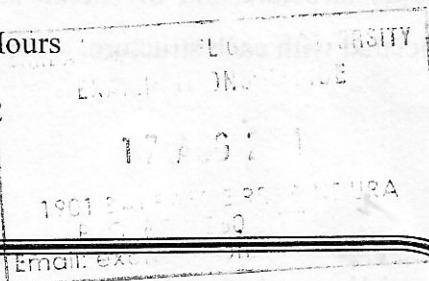
ZIMBABWE EZEKIEL GUTI UNIVERSITY

FACULTY OF BUSINESS, ECONOMICS AND ACCOUNTING

DEPARTMENT OF BUSINESS ADMINISTRATION AND MANAGEMENT

EXAMINATION PAPER

COURSE CODE : CBM102
COURSE TITLE : Principles of Management
DURATION : 3 Hours
LEVEL : 1.2
DATE :



INSTRUCTIONS TO CANDIDATES:

1. No cell phones are allowed in the examination venue.
2. Answer any **FOUR (4)** questions.
3. Begin each question on a new page.
4. The number of marks for each question or part question is shown in brackets []

Question 1

Weber's bureaucracy was an attempt to create an ideal type for organisations. With the aid of examples discuss the 6 characteristics of a bureaucratic organisation. [25 marks]

Question 2

- a) Explain the reasons why planning is essential in organisations. [10 marks]
- b) Discuss the main indicators or symptoms of poor planning in an organization. [15 marks]

Question 3

Compare a functional structure and divisional structure fully discussing the advantages and disadvantages associated with each structure. [25 marks]

Question 4

Motivation is very essential in organisations. Discuss the main motivational strategies managers can use to motivate their employees. [25 marks]

Question 5

- a) Explain the three main types of authority that can be used at workplaces [15 marks]
- b) Discuss the reasons why some managers are not willing to delegate. [10 marks]

End of Paper