



ZIMBABWE EZEKIEL GUTI UNIVERSITY

FACULTY OF BUSINESS, ECONOMICS AND ACCOUNTING

DEPARTMENT OF ECONOMICS AND BUSINESS SCIENCES

EXAMINATION PAPER

COURSE CODE : CBM202
COURSE TITLE : BUSINESS RESEARCH METHODS
SPECIAL REQUIREMENTS : FORMULA BOOKLETS; TABLES; CALCULATOR
DURATION : 3 Hours
LEVEL : 1.2
DATE : 21 NOV 2019

INSTRUCTIONS TO CANDIDATES:

1. No cell phones are allowed in the examination venue.
2. Answer **two** questions from **Section A** and any other **two** questions from **Section B**
3. Begin each question on a new page.
4. The number of marks allocated to each question or part question is shown in brackets
5. All questions carry twenty five marks
6. The number of marks for each question or part question is shown in brackets []

SECTION A

Answer any two questions from this section

Question 1

- a) With the aid of examples define the following terms:
- i) Business research (3 marks)
 - ii) Research problem (3 marks)
 - iii) Research hypothesis (3 marks)
 - iv) Census (3 marks)
 - v) Panel Study (3 marks)
- b) With the aid of examples compare and contrast
- i) Conceptual framework and Theoretical framework (5 marks)
 - ii) Data and Information (5 marks)

(Total 25 marks)

Question 2

Making use of examples, critically examine the relevance of theories in business research.

(25 marks)

(Total 25 marks)

Question 3

'Probability sampling procedures produce reliable samples than non-probability sampling procedures'. In reference to various sampling techniques examine this proposition citing examples wherever necessary.

(Total 25 marks)

SECTION B

Answer any two questions from this section

Question 4

- a) Critically examine the significance of statistics in business researches. (15marks)
- b) Making use of examples distinguish between the following:
- i) Parameter and Statistic (5 marks)
 - ii) Centrality measures and dispersion measures (5 marks)

(Total 25 marks)

Question 5

- a) The morning devotion attendance for ZEGU students is normally distributed with mean 200 and variance 100.

Calculate the probability that on a specific day:

- i) More than 180 students will attend (3 marks)
- ii) Less than 220 students will attend (3 marks)
- iii) Attendance will range between 200 and 220 (4 marks)

- b) The management of Pepsi Bindura wanted to figure out if the sales of their products differ geographically. Average daily sales of the four different geographical locations were recorded in favour of four product categories and tabulated as follows:

Average sales for different Geographical Locations

Product Range	<i>Geographical Location</i>			
	Chipadze	Aerodrome	Woodbrooke	Greenhill
Pepsi cola 500ml	100	80	140	90
Mirinda 500ml	120	90	100	130
Alive 500ml	150	95	120	80
7up 500ml	110	85	130	100

Basing on the information above, test at 5% level of significance if there is a significance difference in the sales realised from the above four different geographical locations.

(15 marks)

(Total 25 marks)

Question 6

- a) Zimbabwe Ezekiel Guti University (ZEGU) endeavoured to figure out the relationship between the number of monthly posted newspaper adverts and the number of applicants for undergraduate programmes per month. Data were collected for ten consecutive months and tabulated as follows:

Month	1	2	3	4	5	6	7	8	9	10
Newspaper Adverts	5	4	3	5	2	4	21	7	8	9
Number of Applications	40	35	25	50	54	60	100	70	85	60

Using the data above:

- i) Calculate the Spearman's rank correlation coefficient. (8 marks)
 - ii) Give an advice to the management of ZEGU (2 marks)
- b) The Standard Association of Zimbabwe wanted to examine the existence of an association between the geographical location of a manufacturer and the quality of product produced. Data were collected and tabulated as follows:

Product Quality	<i>Geographical location</i>		
	Rural	Peri-urban	Urban
Poor	20	12	2
Moderate	14	10	30
High	10	8	40

Test at 5% level of significance if there is an association between product quality and geographical location of the manufacturer.

(15 marks)

(Total 25 marks)

*****END OF PAPER*****

ZIMBABWE EZEKIEL GUTI UNIVERSITY
FACULTY OF BUSINESS, ECONOMICS AND ACCOUNTING
CBM202 (BUSINESS RESEARCH METHODS)

STATISTICAL FORMULAE

Sample Variance:
$$s^2 = \frac{\sum(x-\bar{x})^2}{n-1}$$

Sample Standard Deviation:
$$s = \sqrt{\frac{\sum(x-\bar{x})^2}{n-1}}$$

Product moment correlation coefficient:

$$r_{xy} = \frac{n \sum xy - \sum x \sum y}{\sqrt{[n \sum x^2 - (\sum x)^2][n \sum y^2 - (\sum y)^2]}}$$

Spearman's rank order correlation coefficient:

$$r_{ho} = 1 - \frac{6 \sum d^2}{n(n^2 - 1)}$$

Chi-squared Test Statistic:

$$\chi^2 = \sum \frac{(O - E)^2}{E}$$

Z-score:

$$z = \frac{x-\bar{x}}{s}$$

Standardisation:

$$Z = \frac{x-\mu}{\sigma} \quad \text{Where } Z \sim N(0,1)$$

T-score:

$$T = 50 + 10\left(\frac{x-\bar{x}}{s}\right)$$

Student t-test:

$$t = \frac{\sqrt{(n-1)} \cdot \sum d}{\sqrt{n \sum d^2 - (\sum d)^2}}$$

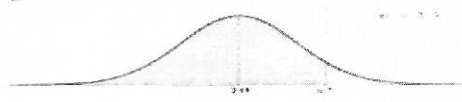
Total Sum of Squares $TSS = \sum x_{ij}^2 - \frac{G^2}{N}$

Group Sum of Squares $GSS = \sum \frac{T^2}{n} - \frac{G^2}{N}$

Block Sum of Squares $BSS = \sum \frac{B^2}{b} - \frac{G^2}{N}$

Residual Sum of Squares: One-way $RSS = TSS - GSS$

Residual Sum of Squares: Two-way $RSS = TSS - (GSS + BSS)$

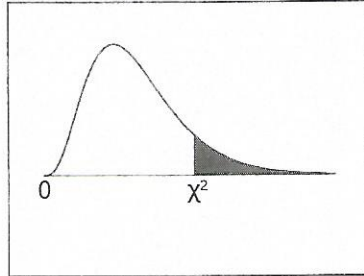


Area under the Normal Curve $P(Z \leq z)$ From -3.49 to 3.62

z	0	0.01	0.02	0.03	0.04	0.05	0.06	0.07	0.08	0.09
-3.4	0.0003	0.0003	0.0003	0.0003	0.0003	0.0003	0.0003	0.0003	0.0003	0.0002
-3.3	0.0005	0.0005	0.0005	0.0004	0.0004	0.0004	0.0004	0.0004	0.0004	0.0003
-3.2	0.0007	0.0007	0.0006	0.0006	0.0006	0.0006	0.0006	0.0005	0.0005	0.0005
-3.1	0.0010	0.0009	0.0009	0.0009	0.0008	0.0008	0.0008	0.0008	0.0007	0.0007
-3	0.0013	0.0013	0.0013	0.0012	0.0012	0.0011	0.0011	0.0011	0.0010	0.0010
-2.9	0.0019	0.0018	0.0018	0.0017	0.0016	0.0016	0.0015	0.0015	0.0014	0.0014
-2.8	0.0026	0.0025	0.0024	0.0023	0.0023	0.0022	0.0021	0.0021	0.0020	0.0019
-2.7	0.0035	0.0034	0.0033	0.0032	0.0031	0.0030	0.0029	0.0028	0.0027	0.0026
-2.6	0.0047	0.0045	0.0044	0.0043	0.0041	0.0040	0.0039	0.0038	0.0037	0.0036
-2.5	0.0062	0.0060	0.0059	0.0057	0.0055	0.0054	0.0052	0.0051	0.0049	0.0048
-2.4	0.0082	0.0080	0.0078	0.0075	0.0073	0.0071	0.0069	0.0068	0.0066	0.0064
-2.3	0.0107	0.0104	0.0102	0.0099	0.0096	0.0094	0.0091	0.0089	0.0087	0.0084
-2.2	0.0139	0.0136	0.0132	0.0129	0.0125	0.0122	0.0119	0.0116	0.0113	0.0110
-2.1	0.0179	0.0174	0.0170	0.0166	0.0162	0.0158	0.0154	0.0150	0.0146	0.0143
-2	0.0228	0.0222	0.0217	0.0212	0.0207	0.0202	0.0197	0.0192	0.0188	0.0183
-1.9	0.0287	0.0281	0.0274	0.0268	0.0262	0.0256	0.0250	0.0244	0.0239	0.0233
-1.8	0.0359	0.0351	0.0344	0.0336	0.0329	0.0322	0.0314	0.0307	0.0301	0.0294
-1.7	0.0446	0.0436	0.0427	0.0418	0.0409	0.0401	0.0392	0.0384	0.0375	0.0367
-1.6	0.0548	0.0537	0.0526	0.0516	0.0505	0.0495	0.0485	0.0475	0.0465	0.0455
-1.5	0.0668	0.0655	0.0643	0.0630	0.0618	0.0606	0.0594	0.0582	0.0571	0.0559
-1.4	0.0808	0.0793	0.0778	0.0764	0.0749	0.0735	0.0721	0.0708	0.0694	0.0681
-1.3	0.0968	0.0951	0.0934	0.0918	0.0901	0.0885	0.0869	0.0853	0.0838	0.0823
-1.2	0.1151	0.1131	0.1112	0.1093	0.1075	0.1056	0.1038	0.1020	0.1003	0.0985
-1.1	0.1357	0.1335	0.1314	0.1292	0.1271	0.1251	0.1230	0.1210	0.1190	0.1170
-1	0.1587	0.1562	0.1539	0.1515	0.1492	0.1469	0.1446	0.1423	0.1401	0.1379
-0.9	0.1841	0.1814	0.1788	0.1762	0.1736	0.1711	0.1685	0.1660	0.1635	0.1611
-0.8	0.2119	0.2090	0.2061	0.2033	0.2005	0.1977	0.1949	0.1922	0.1894	0.1867
-0.7	0.2420	0.2389	0.2358	0.2327	0.2296	0.2266	0.2236	0.2206	0.2177	0.2148
-0.6	0.2743	0.2709	0.2676	0.2643	0.2611	0.2578	0.2546	0.2514	0.2483	0.2451
-0.5	0.3085	0.3050	0.3015	0.2981	0.2946	0.2912	0.2877	0.2843	0.2810	0.2776
-0.4	0.3446	0.3409	0.3372	0.3336	0.3300	0.3264	0.3228	0.3192	0.3156	0.3121
-0.3	0.3821	0.3783	0.3745	0.3707	0.3669	0.3632	0.3594	0.3557	0.3520	0.3483
-0.2	0.4207	0.4168	0.4129	0.4090	0.4052	0.4013	0.3974	0.3936	0.3897	0.3829
-0.1	0.4602	0.4562	0.4522	0.4483	0.4443	0.4404	0.4364	0.4325	0.4286	0.4247
0	0.5000	0.4960	0.4920	0.4880	0.4840	0.4801	0.4761	0.4721	0.4681	0.4641

0	0.5000	0.5040	0.5080	0.5120	0.5160	0.5199	0.5239	0.5279	0.5319	0.5359
0.1	0.5398	0.5438	0.5478	0.5517	0.5557	0.5596	0.5636	0.5675	0.5714	0.5753
0.2	0.5793	0.5832	0.5871	0.5910	0.5948	0.5987	0.6026	0.6064	0.6103	0.6141
0.3	0.6179	0.6217	0.6255	0.6293	0.6331	0.6368	0.6406	0.6443	0.6480	0.6517
0.4	0.6554	0.6591	0.6628	0.6664	0.6700	0.6736	0.6772	0.6808	0.6844	0.6879
0.5	0.6915	0.6950	0.6985	0.7019	0.7054	0.7088	0.7123	0.7157	0.7190	0.7224
0.6	0.7257	0.7291	0.7324	0.7357	0.7389	0.7422	0.7454	0.7486	0.7517	0.7549
0.7	0.7580	0.7611	0.7642	0.7673	0.7704	0.7734	0.7764	0.7794	0.7823	0.7852
0.8	0.7881	0.7910	0.7939	0.7967	0.7995	0.8023	0.8051	0.8078	0.8106	0.8133
0.9	0.8159	0.8186	0.8212	0.8238	0.8264	0.8289	0.8315	0.8340	0.8365	0.8389
1	0.8413	0.8438	0.8461	0.8485	0.8508	0.8531	0.8554	0.8577	0.8599	0.8621
1.1	0.8643	0.8665	0.8686	0.8708	0.8729	0.8749	0.8770	0.8790	0.8810	0.8830
1.2	0.8849	0.8869	0.8888	0.8907	0.8925	0.8944	0.8962	0.8980	0.8997	0.9015
1.3	0.9032	0.9049	0.9066	0.9082	0.9099	0.9115	0.9131	0.9147	0.9162	0.9177
1.4	0.9192	0.9207	0.9222	0.9236	0.9251	0.9265	0.9279	0.9292	0.9306	0.9319
1.5	0.9332	0.9345	0.9357	0.9370	0.9382	0.9394	0.9406	0.9418	0.9429	0.9441
1.6	0.9452	0.9463	0.9474	0.9484	0.9495	0.9505	0.9515	0.9525	0.9535	0.9545
1.7	0.9554	0.9564	0.9573	0.9582	0.9591	0.9599	0.9608	0.9616	0.9625	0.9633
1.8	0.9641	0.9649	0.9656	0.9664	0.9671	0.9678	0.9686	0.9693	0.9699	0.9706
1.9	0.9713	0.9719	0.9726	0.9732	0.9738	0.9744	0.9750	0.9756	0.9761	0.9767
2	0.9772	0.9778	0.9783	0.9788	0.9793	0.9798	0.9803	0.9808	0.9812	0.9817
2.1	0.9821	0.9826	0.9830	0.9834	0.9838	0.9842	0.9846	0.9850	0.9854	0.9857
2.2	0.9861	0.9864	0.9868	0.9871	0.9875	0.9878	0.9881	0.9884	0.9887	0.9890
2.3	0.9893	0.9896	0.9898	0.9901	0.9904	0.9906	0.9909	0.9911	0.9913	0.9916
2.4	0.9918	0.9920	0.9922	0.9925	0.9927	0.9929	0.9931	0.9932	0.9934	0.9936
2.5	0.9938	0.9940	0.9941	0.9943	0.9945	0.9946	0.9948	0.9949	0.9951	0.9952
2.6	0.9953	0.9955	0.9956	0.9957	0.9959	0.9960	0.9961	0.9962	0.9963	0.9964
2.7	0.9965	0.9966	0.9967	0.9968	0.9969	0.9970	0.9971	0.9972	0.9973	0.9974
2.8	0.9974	0.9975	0.9976	0.9977	0.9977	0.9978	0.9979	0.9979	0.9980	0.9981
2.9	0.9981	0.9982	0.9982	0.9983	0.9984	0.9984	0.9985	0.9985	0.9986	0.9986
3	0.9987	0.9987	0.9987	0.9988	0.9988	0.9989	0.9989	0.9989	0.9990	0.9990
3.1	0.9990	0.9991	0.9991	0.9991	0.9992	0.9992	0.9992	0.9992	0.9993	0.9993
3.2	0.9993	0.9993	0.9994	0.9994	0.9994	0.9994	0.9994	0.9995	0.9995	0.9995
3.3	0.9995	0.9995	0.9995	0.9996	0.9996	0.9996	0.9996	0.9996	0.9996	0.9997
3.4	0.9997	0.9997	0.9997	0.9997	0.9997	0.9997	0.9997	0.9997	0.9997	0.9998
3.5	0.9998	0.9998	0.9998	0.9998	0.9998	0.9998	0.9998	0.9998	0.9998	0.9998
3.6	0.9998	0.9998	0.9999							

Chi-Square Distribution Table



The shaded area is equal to α for $\chi^2 = \chi^2_{\alpha}$.

<i>df</i>	$\chi^2_{.995}$	$\chi^2_{.990}$	$\chi^2_{.975}$	$\chi^2_{.950}$	$\chi^2_{.900}$	$\chi^2_{.100}$	$\chi^2_{.050}$	$\chi^2_{.025}$	$\chi^2_{.010}$	$\chi^2_{.005}$
1	0.000	0.000	0.001	0.004	0.016	2.706	3.841	5.024	6.635	7.879
2	0.010	0.020	0.051	0.103	0.211	4.605	5.991	7.378	9.210	10.597
3	0.072	0.115	0.216	0.352	0.584	6.251	7.815	9.348	11.345	12.838
4	0.207	0.297	0.484	0.711	1.064	7.779	9.488	11.143	13.277	14.860
5	0.412	0.554	0.831	1.145	1.610	9.236	11.070	12.833	15.086	16.750
6	0.676	0.872	1.237	1.635	2.204	10.645	12.592	14.449	16.812	18.548
7	0.989	1.239	1.690	2.167	2.833	12.017	14.067	16.013	18.475	20.278
8	1.344	1.646	2.180	2.733	3.490	13.362	15.507	17.535	20.090	21.955
9	1.735	2.088	2.700	3.325	4.168	14.684	16.919	19.023	21.666	23.589
10	2.156	2.558	3.247	3.940	4.865	15.987	18.307	20.483	23.209	25.188
11	2.603	3.053	3.816	4.575	5.578	17.275	19.675	21.920	24.725	26.757
12	3.074	3.571	4.404	5.226	6.304	18.549	21.026	23.337	26.217	28.300
13	3.565	4.107	5.009	5.892	7.042	19.812	22.362	24.736	27.688	29.819
14	4.075	4.660	5.629	6.571	7.790	21.064	23.685	26.119	29.141	31.319
15	4.601	5.229	6.262	7.261	8.547	22.307	24.996	27.488	30.578	32.801
16	5.142	5.812	6.908	7.962	9.312	23.542	26.296	28.845	32.000	34.267
17	5.697	6.408	7.564	8.672	10.085	24.769	27.587	30.191	33.409	35.718
18	6.265	7.015	8.231	9.390	10.865	25.989	28.869	31.526	34.805	37.156
19	6.844	7.633	8.907	10.117	11.651	27.204	30.144	32.852	36.191	38.582
20	7.434	8.260	9.591	10.851	12.443	28.412	31.410	34.170	37.566	39.997
21	8.034	8.897	10.283	11.591	13.240	29.615	32.671	35.479	38.932	41.401
22	8.643	9.542	10.982	12.338	14.041	30.813	33.924	36.781	40.289	42.796
23	9.260	10.196	11.689	13.091	14.848	32.007	35.172	38.076	41.638	44.181
24	9.886	10.856	12.401	13.848	15.659	33.196	36.415	39.364	42.980	45.559
25	10.520	11.524	13.120	14.611	16.473	34.382	37.652	40.646	44.314	46.928
26	11.160	12.198	13.844	15.379	17.292	35.563	38.885	41.923	45.642	48.290
27	11.808	12.879	14.573	16.151	18.114	36.741	40.113	43.195	46.963	49.645
28	12.461	13.565	15.308	16.928	18.939	37.916	41.337	44.461	48.278	50.993
29	13.121	14.256	16.047	17.708	19.768	39.087	42.557	45.722	49.588	52.336
30	13.787	14.953	16.791	18.493	20.599	40.256	43.773	46.979	50.892	53.672
40	20.707	22.164	24.433	26.509	29.051	51.805	55.758	59.342	63.691	66.766
50	27.991	29.707	32.357	34.764	37.689	63.167	67.505	71.420	76.154	79.490
60	35.534	37.485	40.482	43.188	46.459	74.397	79.082	83.298	88.379	91.952
70	43.275	45.442	48.758	51.739	55.329	85.527	90.531	95.023	100.425	104.215
80	51.172	53.540	57.153	60.391	64.278	96.578	101.879	106.629	112.329	116.321
90	59.196	61.754	65.647	69.126	73.291	107.565	113.145	118.136	124.116	128.299
100	67.328	70.065	74.222	77.929	82.358	118.498	124.342	129.561	135.807	140.169

CRITICAL VALUES for the "F" Distribution, ALPHA = .05.

Denominator DF	Numerator DF									
	1	2	3	4	5	6	7	8	9	10
1	161.448	199.500	215.707	224.583	230.162	233.986	236.768	238.883	240.543	241.882
2	18.513	19.000	19.164	19.247	19.296	19.330	19.353	19.371	19.385	19.396
3	10.128	9.552	9.277	9.117	9.013	8.941	8.887	8.845	8.812	8.786
4	7.709	6.944	6.591	6.388	6.256	6.163	6.094	6.041	5.999	5.964
5	6.608	5.786	5.409	5.192	5.050	4.950	4.876	4.818	4.772	4.735
6	5.987	5.143	4.757	4.534	4.387	4.284	4.207	4.147	4.099	4.060
7	5.591	4.737	4.347	4.120	3.972	3.866	3.787	3.726	3.677	3.637
8	5.318	4.459	4.066	3.838	3.687	3.581	3.500	3.438	3.388	3.347
9	5.117	4.256	3.863	3.633	3.482	3.374	3.293	3.230	3.179	3.137
10	4.965	4.103	3.708	3.478	3.326	3.217	3.135	3.072	3.020	2.978
11	4.844	3.982	3.587	3.357	3.204	3.095	3.012	2.948	2.896	2.854
12	4.747	3.885	3.490	3.259	3.106	2.996	2.913	2.849	2.796	2.753
13	4.667	3.806	3.411	3.179	3.025	2.915	2.832	2.767	2.714	2.671
14	4.600	3.739	3.344	3.112	2.958	2.848	2.764	2.699	2.646	2.602
15	4.543	3.682	3.287	3.056	2.901	2.790	2.707	2.641	2.588	2.544
16	4.494	3.634	3.239	3.007	2.852	2.741	2.657	2.591	2.538	2.494
17	4.451	3.592	3.197	2.965	2.810	2.699	2.614	2.548	2.494	2.450
18	4.414	3.555	3.160	2.928	2.773	2.661	2.577	2.510	2.456	2.412
19	4.381	3.522	3.127	2.895	2.740	2.628	2.544	2.477	2.423	2.378
20	4.351	3.493	3.098	2.866	2.711	2.599	2.514	2.447	2.393	2.348
21	4.325	3.467	3.072	2.840	2.685	2.573	2.488	2.420	2.366	2.321
22	4.301	3.443	3.049	2.817	2.661	2.549	2.464	2.397	2.342	2.297
23	4.279	3.422	3.028	2.796	2.640	2.528	2.442	2.375	2.320	2.275
24	4.260	3.403	3.009	2.776	2.621	2.508	2.423	2.355	2.300	2.255
25	4.242	3.385	2.991	2.759	2.603	2.490	2.405	2.337	2.282	2.236
26	4.225	3.369	2.975	2.743	2.587	2.474	2.388	2.321	2.265	2.220
27	4.210	3.354	2.960	2.728	2.572	2.459	2.373	2.305	2.250	2.204
28	4.196	3.340	2.947	2.714	2.558	2.445	2.359	2.291	2.236	2.190
29	4.183	3.328	2.934	2.701	2.545	2.432	2.346	2.278	2.223	2.177
30	4.171	3.316	2.922	2.690	2.534	2.421	2.334	2.266	2.211	2.165
31	4.160	3.305	2.911	2.679	2.523	2.409	2.323	2.255	2.199	2.153
32	4.149	3.295	2.901	2.668	2.512	2.399	2.313	2.244	2.189	2.142
33	4.139	3.285	2.892	2.659	2.503	2.389	2.303	2.235	2.179	2.133
34	4.130	3.276	2.883	2.650	2.494	2.380	2.294	2.225	2.170	2.123
35	4.121	3.267	2.874	2.641	2.485	2.372	2.285	2.217	2.161	2.114
36	4.113	3.259	2.866	2.634	2.477	2.364	2.277	2.209	2.153	2.106
37	4.105	3.252	2.859	2.626	2.470	2.356	2.270	2.201	2.145	2.098
38	4.098	3.245	2.852	2.619	2.463	2.349	2.262	2.194	2.138	2.091
39	4.091	3.238	2.845	2.612	2.456	2.342	2.255	2.187	2.131	2.084
40	4.085	3.232	2.839	2.606	2.449	2.336	2.249	2.180	2.124	2.077
41	4.079	3.226	2.833	2.600	2.443	2.330	2.243	2.174	2.118	2.071
42	4.073	3.220	2.827	2.594	2.438	2.324	2.237	2.168	2.112	2.065
43	4.067	3.214	2.822	2.589	2.432	2.318	2.232	2.163	2.106	2.059
44	4.062	3.209	2.816	2.584	2.427	2.313	2.226	2.157	2.101	2.054
45	4.057	3.204	2.812	2.579	2.422	2.308	2.221	2.152	2.096	2.049
46	4.052	3.200	2.807	2.574	2.417	2.304	2.216	2.147	2.091	2.044
47	4.047	3.195	2.802	2.570	2.413	2.299	2.212	2.143	2.086	2.039
48	4.043	3.191	2.798	2.565	2.409	2.295	2.207	2.138	2.082	2.035
49	4.038	3.187	2.794	2.561	2.404	2.290	2.203	2.134	2.077	2.030
50	4.034	3.183	2.790	2.557	2.400	2.286	2.199	2.130	2.073	2.026

CRITICAL VALUES for the "F" Distribution, ALPHA = .05.

Denominator DF	Numerator DF									
	1	2	3	4	5	6	7	8	9	10
51	4.030	3.179	2.786	2.553	2.397	2.283	2.195	2.126	2.069	2.022
52	4.027	3.175	2.783	2.550	2.393	2.279	2.192	2.122	2.066	2.018
53	4.023	3.172	2.779	2.546	2.389	2.275	2.188	2.119	2.062	2.015
54	4.020	3.168	2.776	2.543	2.386	2.272	2.185	2.115	2.059	2.011
55	4.016	3.165	2.773	2.540	2.383	2.269	2.181	2.112	2.055	2.008
56	4.013	3.162	2.769	2.537	2.380	2.266	2.178	2.109	2.052	2.005
57	4.010	3.159	2.766	2.534	2.377	2.263	2.175	2.106	2.049	2.001
58	4.007	3.156	2.764	2.531	2.374	2.260	2.172	2.103	2.046	1.998
59	4.004	3.153	2.761	2.528	2.371	2.257	2.169	2.100	2.043	1.995
60	4.001	3.150	2.758	2.525	2.368	2.254	2.167	2.097	2.040	1.993
61	3.998	3.148	2.755	2.523	2.366	2.251	2.164	2.094	2.037	1.990
62	3.996	3.145	2.753	2.520	2.363	2.249	2.161	2.092	2.035	1.987
63	3.993	3.143	2.751	2.518	2.361	2.246	2.159	2.089	2.032	1.985
64	3.991	3.140	2.748	2.515	2.358	2.244	2.156	2.087	2.030	1.982
65	3.989	3.138	2.746	2.513	2.356	2.242	2.154	2.084	2.027	1.980
66	3.986	3.136	2.744	2.511	2.354	2.239	2.152	2.082	2.025	1.977
67	3.984	3.134	2.742	2.509	2.352	2.237	2.150	2.080	2.023	1.975
68	3.982	3.132	2.740	2.507	2.350	2.235	2.148	2.078	2.021	1.973
69	3.980	3.130	2.737	2.505	2.348	2.233	2.145	2.076	2.019	1.971
70	3.978	3.128	2.736	2.503	2.346	2.231	2.143	2.074	2.017	1.969
71	3.976	3.126	2.734	2.501	2.344	2.229	2.142	2.072	2.015	1.967
72	3.974	3.124	2.732	2.499	2.342	2.227	2.140	2.070	2.013	1.965
73	3.972	3.122	2.730	2.497	2.340	2.226	2.138	2.068	2.011	1.963
74	3.970	3.120	2.728	2.495	2.338	2.224	2.136	2.066	2.009	1.961
75	3.968	3.119	2.727	2.494	2.337	2.222	2.134	2.064	2.007	1.959
76	3.967	3.117	2.725	2.492	2.335	2.220	2.133	2.063	2.006	1.958
77	3.965	3.115	2.723	2.490	2.333	2.219	2.131	2.061	2.004	1.956
78	3.963	3.114	2.722	2.489	2.332	2.217	2.129	2.059	2.002	1.954
79	3.962	3.112	2.720	2.487	2.330	2.216	2.128	2.058	2.001	1.953
80	3.960	3.111	2.719	2.486	2.329	2.214	2.126	2.056	1.999	1.951
81	3.959	3.109	2.717	2.484	2.327	2.213	2.125	2.055	1.998	1.950
82	3.957	3.108	2.716	2.483	2.326	2.211	2.123	2.053	1.996	1.948
83	3.956	3.107	2.715	2.482	2.324	2.210	2.122	2.052	1.995	1.947
84	3.955	3.105	2.713	2.480	2.323	2.209	2.121	2.051	1.993	1.945
85	3.953	3.104	2.712	2.479	2.322	2.207	2.119	2.049	1.992	1.944
86	3.952	3.103	2.711	2.478	2.321	2.206	2.118	2.048	1.991	1.943
87	3.951	3.101	2.709	2.476	2.319	2.205	2.117	2.047	1.989	1.941
88	3.949	3.100	2.708	2.475	2.318	2.203	2.115	2.045	1.988	1.940
89	3.948	3.099	2.707	2.474	2.317	2.202	2.114	2.044	1.987	1.939
90	3.947	3.098	2.706	2.473	2.316	2.201	2.113	2.043	1.986	1.938
91	3.946	3.097	2.705	2.472	2.315	2.200	2.112	2.042	1.984	1.936
92	3.945	3.095	2.704	2.471	2.313	2.199	2.111	2.041	1.983	1.935
93	3.943	3.094	2.703	2.470	2.312	2.198	2.110	2.040	1.982	1.934
94	3.942	3.093	2.701	2.469	2.311	2.197	2.109	2.038	1.981	1.933
95	3.941	3.092	2.700	2.467	2.310	2.196	2.108	2.037	1.980	1.932
96	3.940	3.091	2.699	2.466	2.309	2.195	2.106	2.036	1.979	1.931
97	3.939	3.090	2.698	2.465	2.308	2.194	2.105	2.035	1.978	1.930
98	3.938	3.089	2.697	2.465	2.307	2.193	2.104	2.034	1.977	1.929
99	3.937	3.088	2.696	2.464	2.306	2.192	2.103	2.033	1.976	1.928
100	3.936	3.087	2.696	2.463	2.305	2.191	2.103	2.032	1.975	1.927