



# ZIMBABWE EZEKIEL GUTI UNIVERSITY

---

FACULTY OF HERITAGE, HUMANITIES, AND SOCIETAL ADVANCEMENT

---

## DEPARTMENT OF SOCIAL WORK

BACHELOR OF SCIENCE (HONOURS) IN SOCIAL WORK

### EXAMINATION PAPER

**COURSE CODE** : ASW223  
**COURSE TITLE** : Social Research Methods 2  
**SPECIAL REQUIREMENTS** : Calculator  
**DURATION** : 3 Hours  
**DATE** :

12 JUN 2024

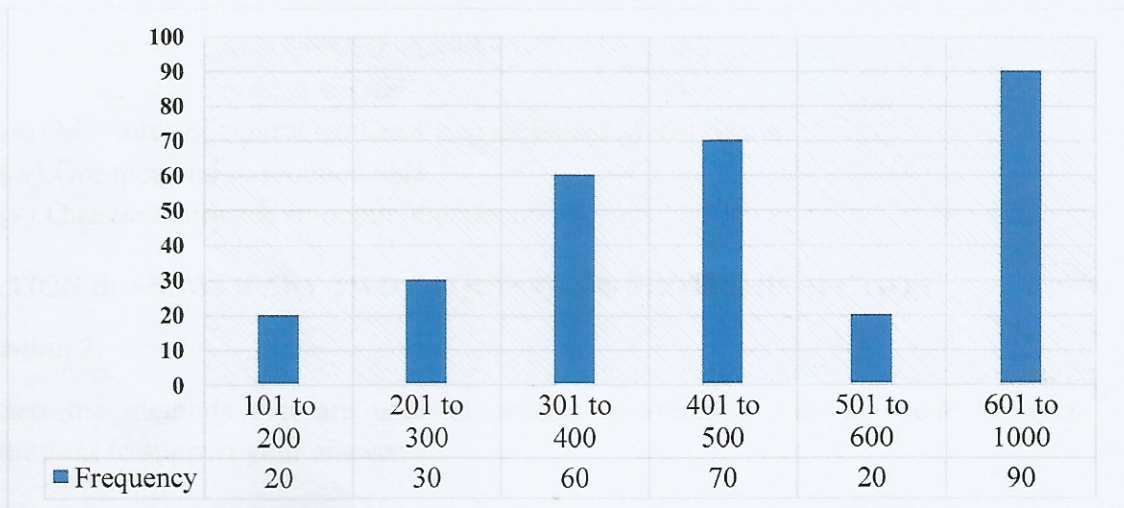
#### INSTRUCTIONS TO CANDIDATES:

1. Section A is **COMPULSORY**
2. Answer any **TWO (2)** questions from Section B
3. Write **ALL** your answers in the provided booklet

**SECTION A: COMPULSORY**

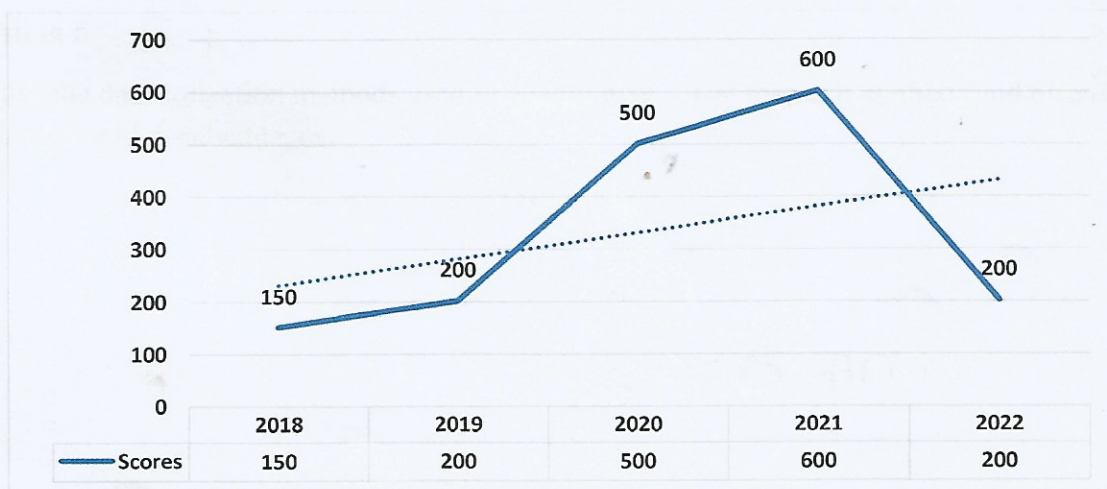
**Question 1**

a) The Mazowe Trust set up nutrition gardens in Matepatapa in 2021 to raise family incomes. A midterm evaluation was done in 2023 to see how the programme affected household income. The income (in US\$) range expressed in class intervals of the sampled families is shown in the next figure:



- (i) From the Figure above, calculate the modal and mean income [15 marks]
- (ii) Record the above information on a frequency table and estimate the median [8 marks]
- (iii) Compute the standard deviation of income [10 marks]
- (iv) Calculate the range and the variance [4 marks]

(b) The following line graph shows the trends in the number of domestic violence cases recorded for 5 years in Chipindura Ward:



- (i) Comment on the distribution of domestic violence cases indicated above [10 marks]
- (ii) What are possible reasons for high domestic violence cases for the period 2019 to 2021 [8 marks]
- (iii) Estimate the standard deviation of domestic violence cases for the period [10 marks]
- (iv) Given the above information, what recommendations would you make for policy and programme interventions? [15 marks]

(c) Differentiate the following terms as used in social research and statistics [20 marks]

- (i) Descriptive and inferential statistics
- (ii) Nominal and ordinal variables
- (iii) Measures of central tendency and measures of dispersion
- (iv) Grouped and ungrouped data
- (v) Questionnaire and in-depth interview

**SECTION B: ANSWER ANY TWO (2) QUESTIONS FROM THIS SECTION**

**Question 2**

Discuss the methods that are used to present quantitative data in social research. Utilise illustrations to support your answer.

**Question 3**

With reference to any complex social problem of your choice in Zimbabwe, identify and discuss the steps that a social work researcher can take to conduct mixed methodology research. Each step should be justified in line with the identified complex social problem.

**Question 4**

Utilising practical examples from developing countries, examine the ethical considerations to be observed when conducting social research.

**Question 5**

Identify the data collection methods used in quantitative social research methods and discuss their advantages and disadvantages.

**THE END**

15170 AM