



Oikos

The Zimbabwe Ezekiel Guti University
Bulletin of Ecology, Science Technology,
Agriculture, Food Systems Review and Advancement

ISSN 2957-8434 (Print)

Vol 1 Issues (1&2), November 2022

©ZEGU Press 2022

Published by the Zimbabwe Ezekiel Guti University Press

Stand No. 1901 Barrassie Rd,

Off Shamva Road

Box 350

Bindura, Zimbabwe

All rights reserved

“DISCLAIMER: The views and opinions expressed in this journal are those of the authors and do not necessarily reflect the official position of funding partners

Typeset by Divine Graphics

Printed by ZEGU Press

EDITOR-IN-CHIEF

- Justin Makota, Zimbabwe Ezekiel Guti University

MANAGING EDITOR

- Jane Chingarande, Zimbabwe Ezekiel Guti University

EDITORIAL ADVISORY BOARD

- Ms Fungai Mukora, University of Zimbabwe, Zimbabwe
- Mr Richman Kokera. University of Zimbabwe, Zimbabwe
- Engineer Hilton Chingosho, University of Zimbabwe, Zimbabwe
- Dr Partson Paradza, BA Isago University, Botswana
- Dr Jameson Kugara, University of Zimbabwe, Zimbabwe
- Mr Denford Nhamo, City of Harare, Zimbabwe
- Dr Netai Muchanyerei, Bindura University of Science Education, Harare

SUBSCRIPTION AND RATES

Zimbabwe Ezekiel Guti University Press Office

Stand No. 1901 Barrassie Rd,

Off Shamva Road

Box 350

Bindura, Zimbabwe

Telephone: ++263 8 677 006 136 | +263 779 279 912

E-mail: zegupress@admin.uz.ac.zw

<http://www.zegu.ac.zw/press>

About the Journal

JOURNAL PURPOSE

The purpose of *the Oikos - The Zimbabwe Ezekiel Guti University Bulletin of Ecology, Science Technology, Agriculture and Food Systems Review and Advancement* is to provide a forum for scientific and technological solutions based on a systems approach and thinking as the bedrock of intervention.

CONTRIBUTION AND READERSHIP

Natural scientists, engineering experts, technologists, and multidisciplinary teams are encouraged.

JOURNAL SPECIFICATIONS

Oikos - The Zimbabwe Ezekiel Guti University Bulletin of Ecology, Science Technology, Agriculture and Food Systems Review and Advancement

ISSN 2957-8434(Print)

SCOPE AND FOCUS

The journal is a forum for the discussion of ideas, scholarly opinions and case studies of natural and physical science with a high proclivity to multidisciplinary approaches. The journal is produced bi-annually.

Guidelines for Authors for the *Oikos* Journal

Articles must be original contributions, not previously published and should not be under consideration for publishing elsewhere.

Manuscript Submission: Articles submitted to the *Oikos - The Zimbabwe Ezekiel Guti University Bulletin of Ecology, Science Technology, Agriculture and Food Systems Review and Advancement* are reviewed using the double-blind peer review system. The author's name(s) must not be included in the main text or running heads and footers.

A total number of words: 5000-7000 words and set in 12-point font size with 1.5 line spacing.

Language: British/UK English.

Title: must capture the gist and scope of the article.

Names of authors: beginning with the first name and ending with the surname.

Affiliation of authors: must be footnoted, showing the department and institution or organisation.

Abstract: must be 200 words.

Keywords: must be five or six containing words that are not in the title

Body: Where there are four authors or more, use *et al.*

Italicise *et al.*, *ibid.* words that are not English, not names of people or organisations, etc. When using more than one citation confirming the same point, state the point and bracket them in one bracket and in ascending order of dates and alphabetically separated by semi-colon e.g. (Falkenmark, 1989, 1990; Reddy, 2002; Dagdeviren and Robertson, 2011; Jacobsen *et al.*, 2012).

Referencing Style: Please follow the Harvard referencing style in that: — In-text, citations should state the author, date and sometimes the page numbers. — The reference list, entered alphabetically, must include all the works cited in the article.

In the reference list, use the following guidelines, religiously:

Source from a Journal

- Anim, D.O and Ofori-Asenso, R (2020). Water Scarcity and COVID-19 in Sub-Saharan Africa. *The Journal of Infection*, 81(2), 108-09.
- Banana, E, Chitekwe-Biti, B and Walnycki, A (2015). Co-Producing Inclusive City-Wide Sanitation Strategies: Lessons from Chinhoyi, Zimbabwe. *Environment and Urbanisation*, 27(1), 3554.
- Neal, M.J. (2020). COVID-19 and Water Resources Management: Reframing Our Priorities as a Water Sector. *Water International*, 45(5), 435-440.

Source from an Online Link

- Armitage, N, Fisher-Jeffes L, Carden K, Winter K, *et al.*, (2014). Water Research Commission: Water-sensitive Urban Design (WSUD) for South Africa: Framework and Guidelines. Available online: <https://www.greencape.co.za/assets/Water-Sector-DeskContent/WRC-Water-sensitive-urban-design-WSUD-forSouth-Africa-framework-and-guidelines-2014.pdf>. Accessed on 23 July 2020.

Source from a Published Book

- Max-Neef, M. (1991). Human Scale Development: Concepts, Applications and Further Reflections, London: Apex Press.

Source from a Government Department (Reports or Plans)

- National Water Commission (2004). Intergovernmental Agreement on a National Water Initiative. Commonwealth of Australia and the Governments of New South Wales, Victoria, Queensland, South Australia, the Australian Capital Territory and the Northern Territory. Available online: <https://www.pc.gov.au/inquiries/completed/waterreform/national-water-initiative-agreement-2004.pdf>. Accessed on 27 June 2020.

The source from an online Newspaper article

Herald, The (2020). Harare City Could Have Used Lockdown to Clean Mbare Market. *The Herald*, 14 April 2020. Available online: <https://www.herald.co.zw/harare-city-could-have-usedlockdown-to-clean-mbare-market/>. Accessed on 24 June 2020.

**A SPATIAL STATISTICAL APPROACH
TOWARDS INDEPENDENCE OF
INFORMAL MANUFACTURERS’
PSYCHOGRAPHICS FROM TOWN
PLANNING PRINCIPLES IN
HARARE**

SIMBARASHE SHOW MAZONGONDA^{1,2}, MACLEANS MZUMARA³,
RUMBIDZAI MPAHLO⁴ AND BEATRICE HICKONICKO⁵

ABSTRACT

This study tested for statistical significance of the association between informal manufacturers ‘psychographics and town planning principles. Health, safety and order amenity constructs were extracted from existing town planning principles and three vignettes encapsulated in psychographics (knowledge, perception and attitude) were captured in the digital questionnaire for each construct. With these constructs and vignettes, the collected data were analysed using the R language in Spat stat and tested for the independence of association

¹

² Department of Demography Settlement and Development, University of Zimbabwe, Zimbabwe

³ Department of Economics, Bindura University of Science Education, Zimbabwe

⁴ Department of Development Studies, Zimbabwe Ezekiel Guti University, Zimbabwe

⁵ Department of Rural and Urban Development, Great Zimbabwe University, Zimbabwe
OIKOS: The Ezekiel Guti University Bulletin of Ecology, Science
Technology, Agriculture, Food Systems Review and Advancement

using a chi-square test at a 0.05 level of significance. Study findings revealed that all three psychological vignettes studied have a very weak relationship with town planning principles. All studied relationships gave an r^2 value of at most 1.17%, implying that less than 2% of manufacturers' psychographics are explained by variations in their understanding of town planning principles. Therefore, planning education must be scaled up so that manufacturers gain a full understanding of the importance of town planning goals.

Keywords: spatiality, human behaviour, policy, planning, management

INTRODUCTION

Understanding the psychographics of informal manufacturers because of town planning is fundamental in predicting their behavioural response to authorities' initiatives such as taxing the informal sector (Government of Zimbabwe (GoZ), 2014). Psychographics define psychological vignettes such as opinions, attitudes, values, knowledge and perception of individuals or groups of participants about a specified phenomenon (Ajzen, 1991; Armitage and Conner, 2001). It is argued that —the relative importance of attitude, subjective norm and perceived behavioural control in the prediction of intention is expected to vary across behaviours and situations (Ajzen, 1991, p 188). Accurate prediction of intentions and behaviour is, therefore, a function of understanding hard data on the importance of attitude, perception and knowledge. The questionable behaviour of informal operators has received considerable attention in the literature (Chirisa, 2007; Shabaneh, 2008; Yiftachel, 2009; Kanbur, 2009; Shah, 2012; Varley, 2013). Outside legally constituted markets, informal operators enjoy free riding, evade taxes and operate in violation of land use zoning laws (Kanbur, 2009; Dube and Chirisa,

2012; Keen and Kanbur, 2015). To this effect, dominating patterns of behaviour, noted over time, are that the informal sector is shy, resilient, resistant, and messy and tax evasive. When the heavy hand of planning is visible and more active, the informal sector kind of hibernates and resurfaces at a later stage. This type of behaviour is something that has been described as resilience and resistance by Chirisa (2007) and Varley (2008), respectively.

Sookram, Watson and Schneider (2006) used the case study of Trinidad and Tobago to explain the perception and attitudinal characteristics of households that participate in the informal sector. The findings of this study are important in giving a general insight into how psychographics influence the behaviour of informal operators. However, discussions of issues surrounding these findings were limited only to socio-economic characteristics, mainly informal operators' perception of risk detection by the tax authorities. A somewhat similar study narrated how street vendors in Harare used their knowledge of town planning to escape development control (Chirisa, 2007). Chirisa's (2007) study revealed that the resilience of informal operators to the role of planning to restore order, capture value and promote good citizenship is driven largely by poverty which pushes people into the streets. No doubt, this study played an important role in bringing to the fore the relationship between town planning principles and the psychographics of informal operators. Limited only to operators in tertiary production, the study did not capture the psychographics of operators in the primary and secondary levels of production. This study failed to report reliability statistics because it was limited in sampling.

As far as it can be ascertained, few studies analysed the psychographics of informal operators, e.g. Sookram, Watson and Schneider (2006) and Chirisa

(2007). None of the accessible studies used hard data to explain the relationship between informal operators' psychographics and town planning principles. Drawing up solid conclusions and making inferences from a few published papers on the psychographics of informal operators is thus suspect on three counts of reliability, replicability and empirical backing. What appears open and straightforward to an ordinary eye might have hidden connotations. This, therefore, urges further research to provide hard data on the relationship between the psychographics of informal operators and town planning principles. Unless such kind of studies are carried out, issues inclined toward psychographics will continue to be discussed using facts devoid of empirical backing. The main objective of the present study is to use a spatial statistical approach to test if informal operators' psychographics depends on their understanding of town principles since psychographics —vary across behaviours and situations (Azjen, 1991, p 188). Essentially, it seeks to find solutions to unanswered questions and challenge unquestioned answers. The hypothesis of this study is as follows: —Informal manufacturers' psychographics does not depend on their understanding of town planning principles.

CONCEPTUALISATION: TRACING THE TOWN PLANNING IDEOLOGY

Tracing competition for space through a historical lens perhaps explains the planning thought and practice. Space is political and people can do anything within their means to control land and land embedded resources (Elden, 2007). All activities happen in space regardless of the type of activity (social, economic, recreational or industrial). However, activities in space should not be allowed to take course haphazardly but should be systemised. Thus, our key

question is: what informs the orientation of activities in space? What is the rationale behind systematically arranging activities in space? How best can activities that mushroom in space be controlled? These and like questions are best answered by the planning ideology.

Planning principles can be traced back to the ancient Greek and Roman cities where the structure of settlements was designed to promote order, health, security and safety. Being agro-based cities, agricultural activities were separated from cultural and recreational land uses (Mumford, 1938). Another notable milestone in the history of town planning is the industrial revolution in Britain in the late 19th century. During this period, there was growth in manufacturing activities, leading to the over-concentration of industries and settlements adjacent to industrial sites. Serious health problems presented themselves and awakened planning authorities to consider separating industrial and residential land uses (McAuslan, 1980; Heap, 1996). Zoning laws were enacted to promote order and public health.

The promotion of planning principles is backed by planning law, regulations, statutory plans and planning standards in deciding settlement structures (Wekwete, 1989; Chaeruka, 2002). In Zimbabwe, layout plans, development plans and master plans are designed with the view of fulfilling the main object of the Regional, Town and Country Planning Act (RTCPA) of 1996. The Act stresses that standards contribute towards promoting health, safety, order, aesthetics, amenity, welfare, convenience, efficiency and public interests. Through part IV, the act provides for development control and how it should be exercised in the country. Despite the clarity of the planning framework in dealing with activities that violate the provisions of the planning ideology, the

informal sector seems to be ‘free riding’ than anything, a mess and resilient to planning control (Chirisa, 2007; Dube and Chirisa, 2012). The next section gives a theoretical inquiry into the knowledge, attitude and perception of informal operators given town principles.

THEORETICAL FRAMEWORK

The meta-analytic review of the Theory of Planned Behaviour (TPB) by Armitage and Conner (2001, p 471) revealed that —27% and 39% of the variance in behaviour and intention, respectively are accounted for by the TPB. This partly explains why the TPB has received mass support in literature as a useful tool for foretelling different behaviours and behavioural intentions (Van den Putte, 1991; Godin, 1993; Blue, 1995; Conner and Sparks, 1996; Godin and Kok, 1996; Hausenblas, Carron and Mack, 1997). Inspired by Armitage and Conner’s (2001) met analytic review, the present study used the TPB to explain the interplay between informal operators ‘cognitive human factors (attitude, perception and knowledge) and town planning principles (order, safety, health and amenity). The TPB is premised on three primary building blocks; behavioural, normative and control beliefs (Ajzen, 1991).

These primary building blocks feed into secondary building blocks: attitude, subjective norm and perceived behavioural control (PBC). All three secondary building blocks inform intention which then influences behaviour. However, PBC can directly influence behaviour in selected cases (Armitage and Conner, 2001). This summative descriptor of the TPB is best illustrated diagrammatically in Figure 1. It must be noted that this paper adapts only the secondary building blocks (highlighted in a dark shade) of the TPB to explain

whether informal operators' psychographics depends on their understanding of town planning principles. Where other parts of the TPB are referred to, it will be to clarify certain issues or explain circumstances

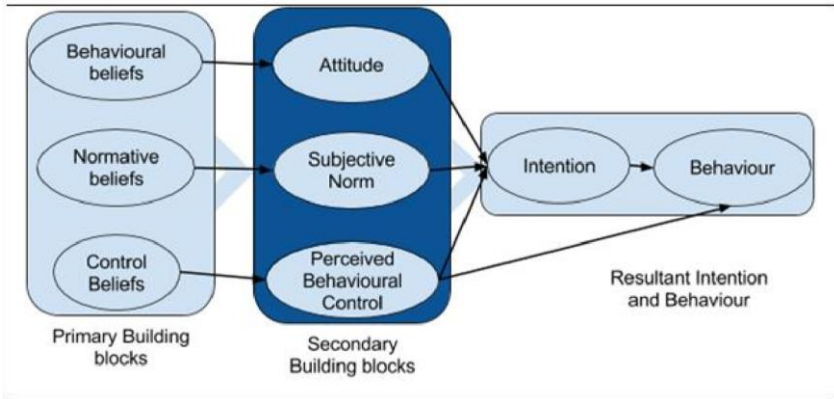


Figure 1: Theory of Planned Behaviour (Adapted from Armitage and Conner, 2001)

Attitude refers to a person's evaluation of a given phenomenon. Attitude can either be positive or negative (Ajzen, 1991). Where the attitude towards a specific behaviour is more positive, —the stronger the individual's intention to perform itll (Armitage and Conner, 2001, p 474). Whether positive or negative, attitude depends on behavioural beliefs, that is, the assumed cost or benefit of acting in a certain way. In cases where the assumed benefits outweigh the costs, individuals are more likely to develop a positive attitude toward something and vice versa. Subjective norm is defined as _an individual's perceptions of general social pressure to perform (or not perform) the behaviourl (ibid.). The intention to act in a particular way depends on one's perception or knowledge that some significant others will approve or disapprove of the intended act. In the context of informal operators, general social pressure is likely to come from other

operators who are likely to motivate the approval or disapproval of certain behaviour. The fundamental feature of the TPB, which differentiates it from the Theory of Reasoned Action (TRA) is the inclusion of PBC (Ajzen, 1991; Conner and Sparks, 1996; Godin and Kok, 1996). PBC defines a set of potential constraints on the action as perceived by the actor. It is argued that PBC feeds from control beliefs which explain the perceived power of inherent factors to facilitate or inhibit the performance of the behaviour (Ajzen, 1991).

The underlying infrastructure of TPB's secondary building blocks (that is, attitude, subjective norm and PBC) are corresponding beliefs explained in the foregoing. These basic factors are widely known in psychological circles as the underlying cognitive structure or human factors (Ajzen, 1991; Van den Putte, 1991; Godin, 1993; Blue, 1995; Armitage and Conner, 2001; Adjibolosso, 2013). Arguably, the quality of human factors is paramount (Adjibolosso, 2013; Chirisa, Mavhima, Matamanda, 2018). In this case, human factors are concerned with understanding the interaction of informal manufacturers and town principles. Dabengwa (1998: p 198) quoted in Chirisa, Mavhima, Matamanda (2018, p 52) has noted that —human factors must be directed towards developing the character content of the human beings who carry out the economic development of their societyl.

Realising optimum human factor quality is envisioned to promote liveable working environments devoid of accidents, noise and pollution. It has been noted that —the relative importance of attitude, subjective norm and perceived behavioural control in the prediction of intention is expected to vary across behaviours and situationsl (Ajzen, 1991: 188). Armitage and Conner (2001: 471) concluded that the subjective norm construct is generally —a weak

predictor of intentions as compared to PBC and attitude. Ajzen's (1991) meta-analysis of the TPB found a multiple correlation coefficient of attitude, subjective norm and PBC, with an intention of $r = 0.71$, signifying a very strong positive relationship. In the present study, we wish to determine how human factors (specifically, attitude, knowledge and PBC) of informal operators vary in the context of town planning principles.

RESEARCH METHODOLOGY

The study was carried out in the Harare Metropolitan Province of Zimbabwe as shown in Figure 2.

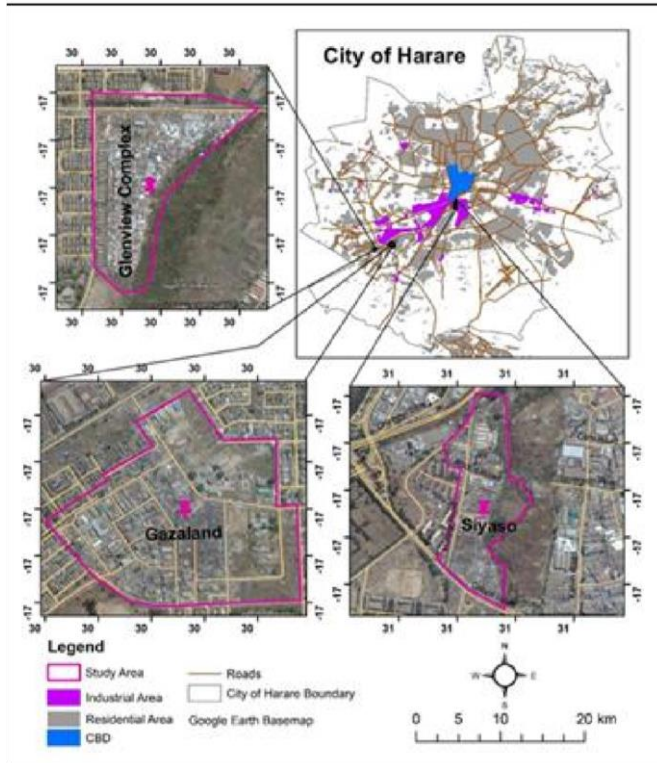


Figure 2: Location of Study Areas (Google Maps, 2016)

The study was designed using the multiple case study of three sampling windows (study sites), that is, Siyaso, Gazaland and Complex Home Industries in Harare, Zimbabwe.

Within the multiple case study of three home industries, only the embedded case of informal manufacturing was studied. Informal manufacturing, in the secondary level of production, was purposively selected because it accounts for a larger proportion of activities in terms of both the level and value of trade. Informality in Zimbabwe and elsewhere is cross-sector visible, found in the

primary, secondary and tertiary levels of production (Chirisa, 2009; MirafTAB, 2009; Varley, 2009; Dube and Chirisa, 2012; Majumdar and Borbora, 2012; Shah, 2012). In comparison to other levels of production, the secondary level of production generates large volumes of activity and employs a substantial number of people (Hart, 1973; Despres, 1988; Sparks and Barnett, 2010; Majumdar and Borbora, 2012). The diagrammatic illustration of the multiple-embedded case study design adopted for this study is shown in Figure 3.

Drawing up experiences from three different cases, arguably, guaranteed conclusive power (Johnson and Onwuegbuzie, 2004; Creswell, 2005; Yin, 2006; Saunders, Lewis and Thornhill, 2009). This strategy helped in tracing similarities, congruencies and variations in patterns of behaviour and assumed a positive correlation between operators working in neighbouring areas. Within the multiple embedded case study, a sample survey was used to gather data from the informal manufacturers. That survey helped in mapping the spatial distribution of informal manufacturing activities in home industries.

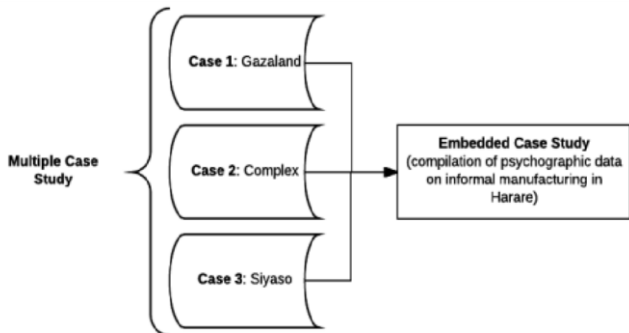


Figure 3: Multiple-Embedded Case Study Strategy (Adapted from

Johnson and Onwuegbuzie, 2004; Yin, 2006)

A customised android mobile geo-application, based on Geographic Position System (GPS), was developed by a data scientist specifically for use in data collection for the survey of informal manufacturing in Harare.

Snowball sampling made it easy to utilise the spatial setting and assumed a positive correlation between manufacturers in establishing the trade flow network connecting informal operators.

With the help of a data scientist, Python scripts were used for data cleaning through the removal of null responses and erroneous (illegal values) due to typing mistakes by enumerators, e.g. an age value of more than 360 or less than five years. The cleaned and normalised data were analysed first in R language's Spatstat package to find measures of average and spread. Further analyses were done in R language using chi-square tests to determine whether the psychographics of individual operators depend on their understanding of town planning principles. Where there was dependence, the relationship was quantified using regression analysis and the strength of association was calculated using Pearson Product Moment Correlation Coefficient (PMCC). Complementary to the statistical analysis is a force field analysis which was used to systematically analyse the restraining and driving forces surrounding this complex town planning and urban informality impasse.

ANALYSIS OF STUDY RESULTS

The results are classified according to the psychographic-town planning principle nexus per study site. Results for all statistical tests were carried out at a 5% level of significance. On one end, collective results were determined using a chi-square threshold value of 15.507 corresponding to 8° of freedom and 0.05 level of significance, While n the other, site-specific results were determined using a chi-square threshold value of 9.488 corresponding to 4° degrees of freedom and a 0.05 level of significance. Any chi-square value above the threshold value led to the rejection of the null hypothesis in favour of the alternative hypothesis and vice versa. Semi-processed data, which led to the synthesised results in this section. Such data was captured using scenario-based questions crafted with hidden meaning as explained in the materials and methods section.

KNOWLEDGE-TOWN PLANNING RELATIONSHIP

A detailed quantitative investigation of the relationship between knowledge of informal manufacturers and each of safety, order, amenity and health is discussed in this sub-section. Table 1 shows a detailed summary of this relationship.

Table 1: Knowledge-Town Planning Relationship (Study Findings, 2017)

Relationship	Collective (N=642)		Gazaland (N=189)		Siyaso (N=242)		Complex (N=211)	
	χ^2	r^2	χ^2	r^2	χ^2	r^2	χ^2	r^2
Knowledge-Safety	32.38	0.0016134176	31.613	0.0011041917	6.294	0.0013187531	9.164	0.0027291837e ⁻⁵
Knowledge-Order	23.155	0.0004811912	21.128	0.0008671894	7.54	8.4711278e ⁻⁵	5.286	0.0003639453
Knowledge-Amenity	23.941	0.001209329836176	19.154	8.6725338270007e ⁻⁷	11.784	0.003524997573456	4.593	0.0038636145
Knowledge-Health	26.65	0.003736349977976	17.337	0.003961327791246	5.732	0.00190338493284	16.155	0.000257818914544

Overall, informal manufacturers' knowledge depends on their understanding of all town principles (safety, health, order and amenity). This is supported by collective chi-square values which are above the cut-off value of 15.507 for all four relationships (see first column of Table 1). Despite the existence of positive relationships, collective results suggest that all relationships are very weak, with less than 1% of their knowledge explained by the variation in understanding of the town planning ideology (all collective r^2 values are below 0.001). The greater percentage, more than 99%, of the variation in this dependence is explained by other factors, other than human factors under study, sampling error included.

This overall interpretation is influenced largely by Gazaland whose contribution outweighs other sampling windows. This is probably because, informal as it is and disorderly as it appears, the degree of orderliness in Gazaland is far much

better when one compares it with Siyaso and Complex. Such higher quality of orderliness promotes safety and health practices for both the manufacturers and the environment. Just like the collective results on the knowledge-town planning principle relationship, all chi-square values for Gazaland are above the threshold value of 15.507. This signifies that informal manufacturers 'knowledge depends on their understanding of town planning principles. They have some knowledge of town planning principles, but their knowledge is, to a larger extent, clouded by the profit motive and probably a general lack of training on such issues.

For Siyaso, manufacturers 'knowledge does not depend on their understanding of the safety, order and health principles given their chi-square values which are all below the 9.448 threshold value. Only, the knowledge-amenity relationship for Siyaso explains some form of dependence given the chi-square value of 11.784 which is above the threshold value. Even for a knowledge-amenity relationship where there is dependence, the degree of dependence is very weak ($r^2 =$

0.00352) with only 0.352% of the variation in their knowledge explained by the relationship between knowledge and amenity principle. Knowledge of manufacturers working in the Complex does not depend on their understanding of safety, order and amenity ideology, giving their chi-square values of 9.164, 5.286 and 4.593 respectively which are all below the 9.448 threshold value. For the manufacturers in the Complex, the relationship between knowledge and health principle generated a chi-square value above the threshold value (16.155) implying that manufacturers' knowledge is, to some extent, explained by their understanding of health practices.

Whether knowledge of manufacturers working in the Complex depends on their understanding of town planning principles, the coefficient of determination for the four relationships studied is all less than 0.01, implying that more than 99% of manufacturers' knowledge is explained by other variables other than their understanding of safety, order, health and amenity principles. Thus, informal manufacturers' knowledge of town planning principles differs from site to site, though there is an insignificant difference across the three sites studied. Because of this insignificant difference, all relationships proved to be weak. So, the variation in informal manufacturers' knowledge is, to a lesser extent, explained by their understanding of town planning principles. This implies that the quality of the interaction of manufacturers' knowledge and town planning principles is very low.

ATTITUDE-TOWN PLANNING RELATIONSHIP

Informal manufacturers' attitudes toward town planning principles, which can either be positive or negative (Armitage and Conner, 2001), produced the results as summarised in Table 2.

Table 2: Attitude-Town Planning Relationship (Study Findings, 2017)

Relationship	Collective (N=642)		Gazaland (N=189)		Siyaso (N=242)		Complex (N=211)	
	χ^2	r ²	χ^2	r ²	χ^2	r ²	χ^2	r ²
Attitude-Safety	35.668	5.0372 704e ⁻⁵	17.019	0.000 57267 07	2.989 4	0.000 111667 8	32.47	0.0011 64302
Attitude-Amenity	36.548	0.001 89774 98	12.558	0.000 51854 99	8.649	0.008 96690 25	33.21	0.0143 50027 4
Attitude-Health	2.4244	0.002 01453 49	1.0036	0.0011 09669 9	1.8554	0.0021 80744 3	0.834 6	0.000 34097 88
Attitude-Order	11.731	0.004 11814		0.0011 2682		0.005 83323		0.0021 3692

Attitude-safety and attitude-amenity relationships for Gazaland and the Complex resulted in chi-square values above the threshold value implying, that the attitude of informal manufacturers depends on their understanding of safety and amenity principles. This positive attitude towards safety and amenity shown by manufacturers working in Gazaland and the Complex partly explains why the collective chi-square values for these two relationships attitude-safety and attitude amenity) is also above the cut-off value of 15.507. These results cloud the chi-square values for the same relationships for manufacturers working in Siyaso. Generally, manufacturers in Siyaso have a negative attitude (signifying poor human factor quality) towards safety, amenity and health. This is explained by chi-square values of 2.984, 8.469 and 1.8554, respectively, which are all below the threshold value of 9.448. The fact is that there are poor-quality human factors as far as health and safety are concerned. Thus, their negative attitude partly explains why they are dotted haphazardly in space without concern for the health and safety implications associated with overconcentration. In the long run, the existence of low-quality human factors will expose manufacturers and

people residing in neighbourhoods surrounding sampling windows to health risks. Negative externalities such as health risks have more geographically concentrated impacts.

Shockingly, for all three sampling windows, manufacturers' attitude towards health is negative because of chi-square values which are all below the cut-off value. They seem not to care about health implications associated with land compartmentalisation practices within home industries, leading to a complex mixture of land uses. For example, an observed reality in all the home industries is that grinding dust circulates freely in the air finding its way to food being prepared adjacent to manufacturing activities. Such poor-quality human factors concerning public health could be a potential health hazard because some of the grinding dust may contain toxic substances with long-term negative effects.

PERCEPTION-TOWN PLANNING RELATIONSHIP

Findings relating to the perception of informal manufacturers towards town planning principles are presented in Table 3. Gazaland and Complex have comparable levels of dependence on manufacturers' perception of safety, order and amenity principles (all chi-square values are above the 9.448 threshold value). These perceptive results suggest that individual controlling beliefs in these two sites are shaped by their concern for safety, order and amenity practices. Such a positive concern is explained by good quality human factors towards town planning principles.

Table 3: Perception-Town Planning Relationship (Study Findings, 2017)

Relationship	Collective (N=642)		Gazaland (N=189)		Siyaso (N=242)		Complex (N=211)	
	χ^2	r^2	χ^2	r^2	χ^2	r^2	χ^2	r^2
Perception-safety	20.265	8.6991 791e ⁻⁵	10.497	2.988 2393e ⁻⁵	1.2381	0.000 111257 1	18.00 4	3.1117 163e ⁻⁵
Perception-order	22.023	0.002 48675 96	18.031	0.008 76782 97	2.8781	1.7470 728e ⁻⁵	11.182	0.009 05671 98
Perception-amenity	43.45	0.001 61862 91	37.07	0.008 45387 02	5.196	0.000 35329 71	20.92 8	0.0117 95089 5

Siyaso generated results that are contrary to other sites. For each of the three relationships perception-safety, perception-order and perception amenity, the controlling beliefs of individual manufacturers are not shaped or influenced by their understanding of town planning principles (χ^2 is less than the threshold value of 9.448). The perception amenity relationship for the Complex is peculiar because the controlling beliefs of individual manufacturers contribute 1.17% to the variation in their amenity practices. Contrary to this, in all other relationships, regardless of sites, individual manufacturers ‘controlling beliefs contribute less than 1% variation in their practice of town planning principles.

DISCUSSION

Collective results of the three study sites revealed that informal manufacturers ‘knowledge, that is, human factor quality, depends on their understanding of each of safety, health, order and amenity (see first column of Table 1). Despite the existence of positive relationships, collective results suggest that all relationships are very weak, with less than 1% of their knowledge explained by the variation in understanding of the town planning ideology (all collective r^2 values are below 0.001). This finding is supported by Armitage and Conner’s

(2001) meta-analytic review of the TPB which concluded that the subjective norm construct is generally —a weak predictor of intentions as compared to PBC and attitude. On the same note, Chirisa (2007)'s post-2005 Harare study of informality revealed that street vendors used their knowledge of town planning principles to escape development control. However, Chirisa's (2007) conclusion did not indicate whether this relationship is weak or strong because it was devoid of quantitative backing. It must be noted that the revealed weak relationship cannot be generalised across different sites since it differs between sites. It is also critical to note that collective and site-specific results of the perception-town planning principle and attitude town planning relationships were found to be generally weak. All three vignettes encapsulated in cognitive human factors (knowledge, perception and attitude) revealed a very weak relationship with town planning principles. This is explained by coefficients of determination of at most 1.17% for all studied relationships. This is contrary to the conclusion by Armitage and Conner (2001) that the knowledge vignette is generally a weak predictor of behaviour as compared to PBC and attitude.

CONCLUSION AND RECOMMENDATIONS

The foregoing paragraphs have revealed the relationship between three cognitive human factors (knowledge, attitude and perception) of informal manufacturers and each of the four constructs (health, order, safety and health) embedded in town planning principles. Of the 12 expected relationships per study site, one relationship was dropped at the data cleaning and reduction stage. Results of the final 11 relationships revealed that there is a generally weak relationship between informal manufacturers' cognitive human factors and town planning principles with varying degrees of weakness. Therefore, it is recommended that planning education must be scaled up with the view of

improving informal manufacturers' knowledge, attitude and perception toward planning principles. It is envisioned that this will go a long way in changing their psychographics toward town planning principles. It is also important for future researchers to consider a deep dive into other factors that can predict the intentions and behaviours of informal manufacturers. Human factors are significant in understanding how the moral, aesthetic and human capital components must be improved, particularly, in changing the attitudes of manufacturers to be more positive, power-packed with faith, hope and love based on principles regarding what is wrong and right and having a deep sense of and love for order and the knowledge and acquired skills. This will go a long way in promoting order, health, safety and amenity, thereby sustaining liveable environs.

REFERENCES

- Adjibolosso, S. 2013. —Pursuing Sustained Socioeconomic Change in Africa: The Human Factor Way.‖ *The African Business Review*, July-August: 043-048.
- Armitage, C. J. and M. Conner. 2001. —Efficacy of the Theory of Planned Behavior: A Meta-Analytic Review.‖ *Journal of Social Psychology*, 40: 471–499.
- Ajzen, I. 1991. —The Theory of Planned Behavior.‖ *Organizational Behavior and Human Decision Processes*, 50: 179–211.
- Baddeley, A. 2010. —Modeling Strategies.‖ In A. E. Gelfand *et al.* eds. *Handbook of Spatial Statistics*. Hershey.: Taylor and Francis.
- Blue, C. L. 1995. —The Predictive Capacity of the Theory of Reasoned Action and the Theory of Planned Behavior in Exercise Research: An Integrated Literature Review.‖ *Research in Nursing and Health*, 18: 105-121.
- Chaeruka, J. 2002. Parameter and Practice of Development Control in Zimbabwe: An Evaluation of the System of Development Control with Emphasis on the Determination of Planning Permission and Appeals. Unpublished Mphil Thesis. Harare.: University of Zimbabwe.
- Chirisa, I. 2007. —Post-2005 Harare: A Case of the Informal Sector and Street Vending Resilience. What Options Do Key Actors Have?‖ *Local Governance and Development Journal*, 1(1): 053-064.
- Chirisa, I., B. Mavhima and A. R. Matamanda. 2018. —Youth, the Big Man Syndrome and Human Factor Decay in Urban Land Delivery in Zimbabwe.‖ *Review of Human Factor Studies*, 24(1): 046-065.
- Conner, M. and P. Sparks. 1996. —The Theory of Planned Behavior and Health Behaviors.‖ In M. Conner and P. Norman, eds. *Predicting Health Behavior*. Buckingham.: Open University Press.
- Creswell, J. W. 2005. *Research Design: Qualitative, Quantitative and Mixed Methods Approaches*. California.: Sage Publications.
- Despres, L. A. 1988. *Macro Theories, Micro Contexts and the Informal Sector: Case Studies of Self-Employment in Three Brazilian Cities*. Working Paper Number 110. Michigan.: Kellogg Institute.
- Dube, D. and I. Chirisa. 2012. —The Informal City: Assessing its Scope, Variants and Direction in Harare, Zimbabwe.‖ *Global Advanced Research Journal of Geography and Regional Planning*, 1(1): 016-025.

- Elden, S. 2007. —There is Politics of Space Because Space is Political.‖ *Radical Philosophy Review*, 10(2): 101-116.
- Godin, G. 1993. —The Theories of Reasoned Action and Planned Behavior: Overview of Findings, Emerging Research Problems and Usefulness for Exercise Promotion.‖ *Journal of Applied Sport Psychology*, 5: 141–157
- Godin, G. and G. Kok. 1996. —The Theory of Planned Behavior: A Review of its Applications to Health-Related Behaviors.‖ *American Journal of Health Promotion*, 11: 87-98.
- GOZ (Government of Zimbabwe). 2014. *The 2014 Mid-Year Fiscal Policy Review Statement: Towards an Empowered Society and a Growing Economy*. Presented to the Parliament of Zimbabwe on Thursday, 11 September 2014. Harare.: Government of Zimbabwe.
- Hart, K. 1973. —Informal Income Opportunities and Urban Employment in Ghana.‖ *Modern African Studies*, 11(1): 61-89.
- Hausenblas, H. A., A. V. Carron and D. E. Mack. 1997. —Application of the Theories of Reasoned Action and Planned Behavior to Exercise Behavior: A Meta-Analysis.‖ *Journal of Sport and Exercise Psychology*, 19: 36–51.
- Heap, D. 1996. *An Outline of Planning Law*. England.: Sweet and Maxwell.
- Johnson R. B. and A. J. Onwuegbuzie. 2004. —Mixed Methods Research: A Research Paradigm Whose Time Has Come.‖ *Educational Researcher*, 33(7): 14–26.
- Kanbur, R. 2009. —Conceptualising Informality: Regulation and Enforcement.‖ *Indian Journal of Labour Economics*, 52(1): 33-42.
- Keen, M. and R. Kanbur. 2015. —Reducing Informality.‖ *Finance and Development*, 52(1): 52-54.
- McAuslan, P. 1980. *The Ideologies of Planning Law*. Pergamon Press.: Oxford.
- Majumdar, A. and S. Borbora. 2012. —Growth and Dynamics of the Informal Manufacturing Sector in Assam: A Comparison to the National Level.‖ *Journal of Business Management and Social Sciences Research*, 1(1): 104-120.
- Mazongonda, S. S. and F. Muromo. 2011. —Enforcement Orders in Harare: Tools for Promoting Development Control.‖ *Zambezia*, 33(i/ii): 51-56.
- Miraftab, F. 2009. —Insurgent Planning: Situating Radical Planning in the Global South.‖ *Planning Theory*, 8(1): 32-50.

- Mumford, L. 1938. *The Culture of Cities*. San Diego.: Harcourt Brace Jovanovich Publishers.
- Muponda, G. 2012. Nurturing Latent Entrepreneurship and the Growth of Small Firms in Zimbabwe: A Case Study of Harare Metropolitan Province. Unpublished PhD. Thesis. Harare.: University of Zimbabwe.
- Saunders, M. N., P. Lewis and A. Thornhill. 2011. *Research Methods for Business*. New Delhi.: Pearson Education.
- Schneider, F. 2005. —Shadow Economies around the World: What do we Really Know?|| *European Journal of Political Economy*, 21(3): 598-642.
- Shabaneh, I. 2008. Measurement of Informal Sector in Adverse Conditions: Relevance of Methods. Bamako.: Palestinian Central Bureau of Statistics.
- Shah, M. K. 2012. *The Informal Sector in Zambia: Can it Disappear? Should it Disappear?* Working Paper 12/0425. London.: International Growth Centre.
- Sookram, S., P. K. Watson and F. Schneider. 2006. Characteristics of Households in the Informal Sector of an Emerging Economy. Available at: <https://pdfs.semanticscholar.org/c3aa/597e1440cf691a5ee7dd5d00470b8913b0cc.pdf> [Accessed 28 June 2018].
- Sparks, D. L. and S. T. Barnett. 2010. —The Informal Sector in SubSaharan Africa: Out of the Shadows to Foster Sustainable Employment and Equity.|| *International Business and Economics Research Journal*, 9(5): 001-012.
- Uzhenyu, D. 2015. —Formalisation of the Informal Sector in Zimbabwe: A Key Success Factor to Sustainable Development.|| *Journal of Business and Management*, 17(10.Ver. II): 64-75.
- Van den Putte, B. 1991. 20 Years of the Theory of Reasoned Action of Fishbein and Ajzen: A Meta-Analysis. The Netherlands.: University of Amsterdam.
- Varley, A. 2013. —Postcolonialising Informality?|| *Environment and Planning D: Society and Space*, 31(1): 4-22.
- We were K. H. 1989. *Planning Laws for Urban and Regional Planning in Zimbabwe: A Review*. RUP Occasional Paper No. 20. Harare.: University of Zimbabwe.

- Yiftachel, O. 2009. —Theoretical Notes on ‘Gray Cities’: The Coming of Urban Apartheid. *Planning Theory*, 8(1): 87-99.
- Yin, R. K. 2006. —Mixed Methods Research: Are the Methods Genuinely Integrated or Merely Parallel? *Research in the Schools*, 13: 41–47.
- ZIMSTATS. 2012. *Labour Force Survey*. Harare.: Government of

Zimbabwe.

